

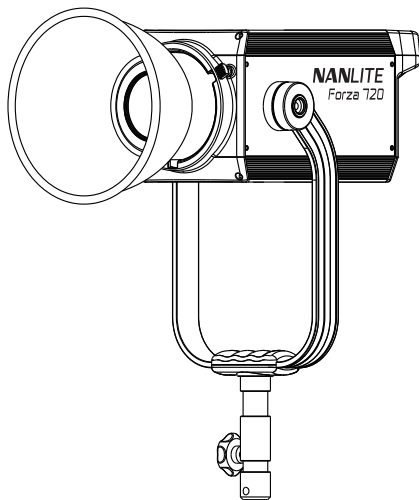
NANLITE

Forza 720
USER MANUAL

Guangdong NanGuang Photo&Video Systems Co., Ltd.

Forza 720 LED Spot Light

■ Product Diagram



■ Technical Data

Rated power: 800W

Input: DC48V/16.67A Max

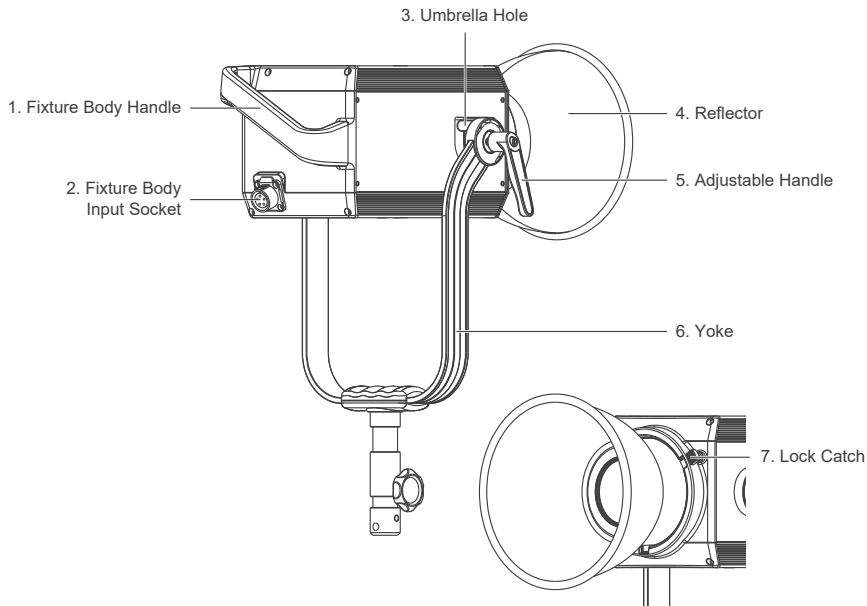
AC100-240V 50/60Hz

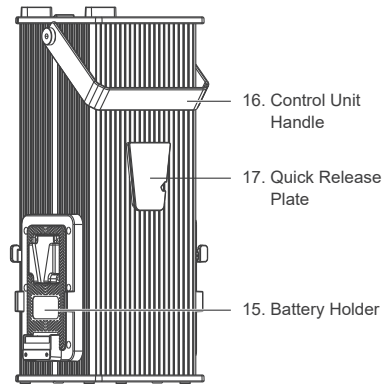
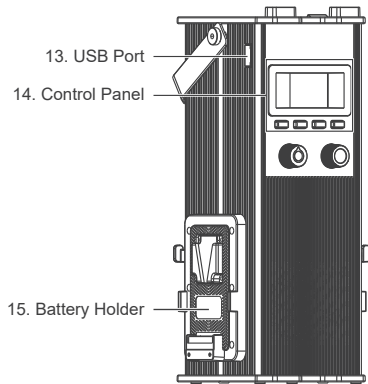
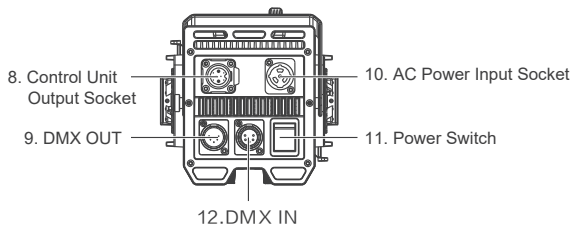
Color Temperature: 5600K

CRI: 95

TLCI: 96

Product Details



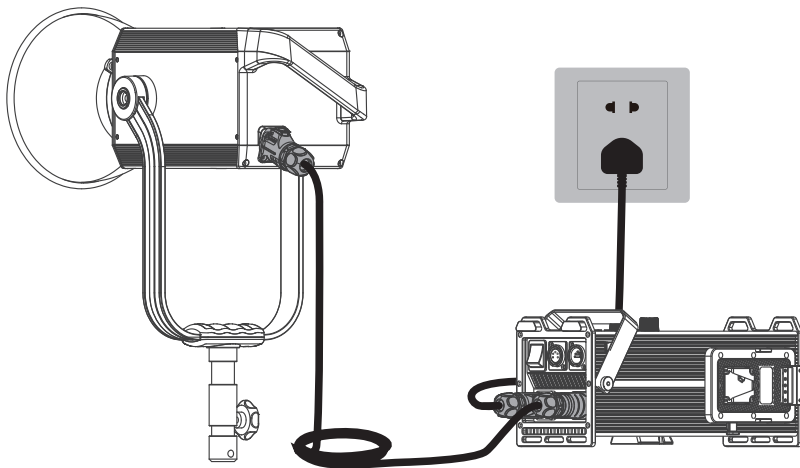


■ Detailed Description

1. Fixture body handle: For lifting the fixture body and adjusting the direction of the illumination.
2. Fixture body input socket: For connecting the fixture body with control unit.
3. Umbrella hole: For installing/removing an umbrella.
4. Reflector: For concentrating light to improve the central illumination.
5. Adjustable Handle: Tighten or release the tilt movement of the fixture on the yoke.
6. Yoke: For connecting the fixture to the light stand and adjusting the direction of illumination.
7. Lock catch: To lock or release the reflector or other accessories.
8. Control unit output socket: For connecting the DC cable for connecting the fixture body and control unit.
9. DMX OUT: DMX signal output interface.
10. AC power input socket: For connecting the AC power cable to supply power to the control unit.
11. Power switch: To turn on/off the fixture.
12. DMX IN: DMX signal input interface.
13. USB port: For updating the firmware
14. Control panel: For displaying various function operations and data.
15. Battery holder: For mounting the 14.4-26V/12A V-mount battery.
16. Control unit handle: For lifting the control unit.
17. Quick release plate: For mounting the quick release clamp.

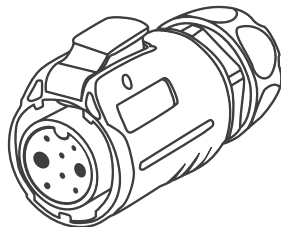
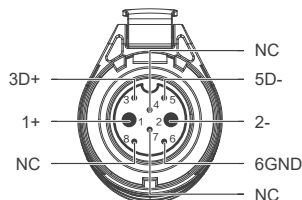
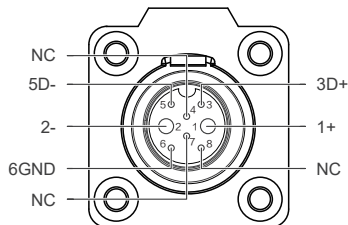
Usage

1. Connection between the Light Fixture, Control Unit and the Power Outlet.



Note:

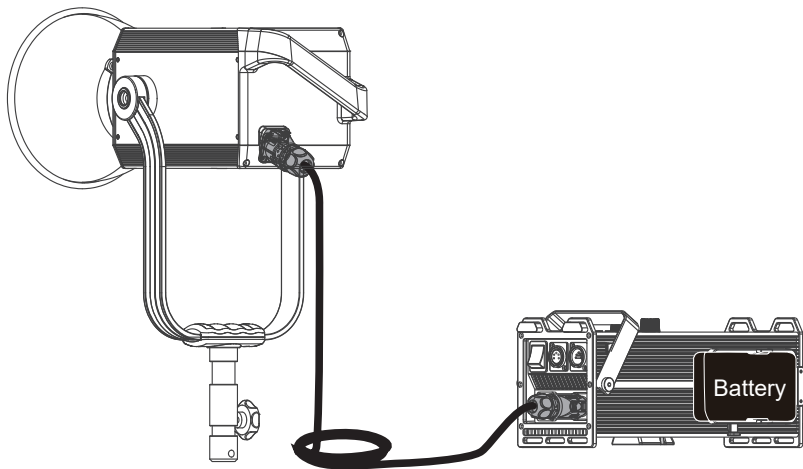
- ① When connecting the power supply, please make sure the power, voltage and frequency are consistent with the control unit.
- ② Make sure to use the provided power cable and DC connecting cable. The connection between the DC plug and the fixture body input socket should be connected as following



- 1: Power supply + pole
- 2: Power supply - pole
- 3: D+
- 4: NC

- 5: D-
- 6: GND
- 7: NC
- 8: NC

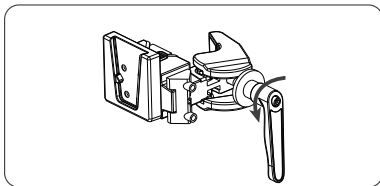
2. Connection between the Light Fixture and Control Unit with Battery



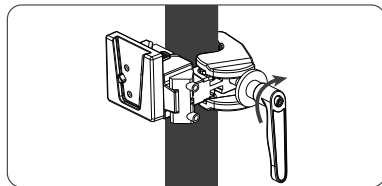
Note:

- ①When powered by two 14.8V batteries, the maximum output is 40%.
- ②When powered by two 26V batteries, the maximum output is 70%.
- ③Do not use the 14.8V and 26V batteries at the same time, or use only one battery of either kind to power the fixture.
- ④The batteries are not included and are sold separately.

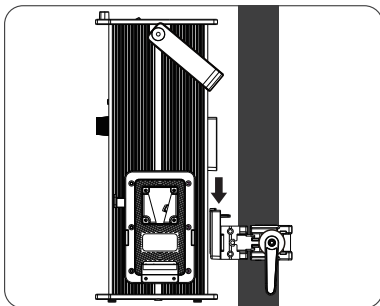
3. Quick Release Clamp Installation



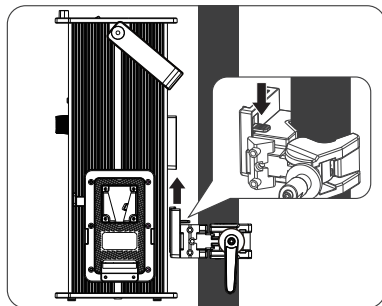
① Rotate the adjustable handle to release the clamp.



② Mount the quick release clamp on the light stand, then rotate the adjustable handle to tighten the clamp.

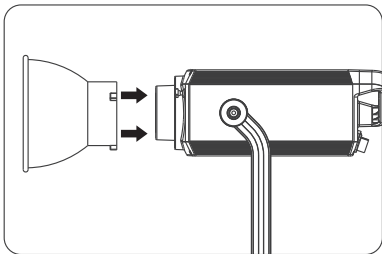


③ Align the quick release plate on the control unit with the quick release mount on the clamp, a click sound will be heard when the control unit is fastened in place.

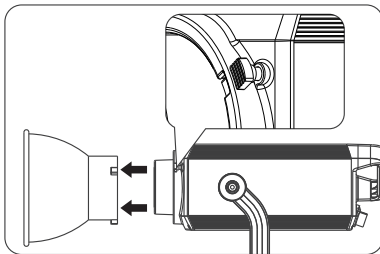


④ When removing the control unit, press the lock catch on the clamp and release the control unit from the clamp.

4. Reflector Installation



① Align the reflector to the fixture's Bowens mount, rotate the reflector in the direction shown on the fixture until it clicks into place.



② Press the lock catch and rotate the reflector until it is free to be removed from the fixture.

Remote Control

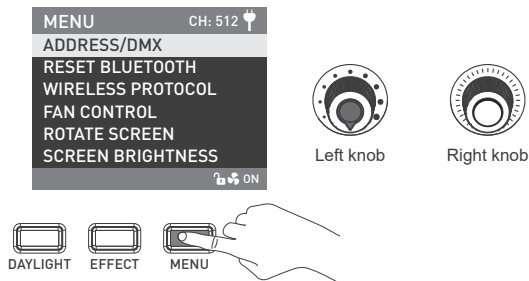
- Forza 720 supports DMX, 2.4G, RDM remote control, and includes a built-in Bluetooth as well.

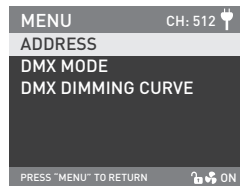
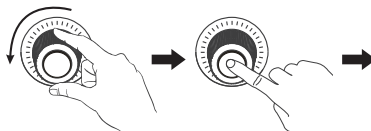
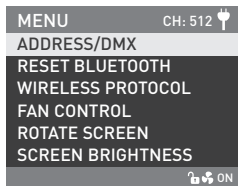
▲ Address code need to be pre-set for DMX, 2.4G, RDM remote control solutions.

1. ADDRESS/DMX, including ADDRESS, DMX MODE and DMX DIMMING CURVE settings.

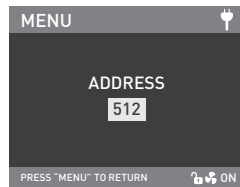
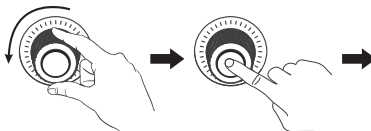
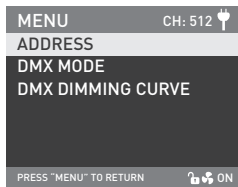
① ADDRESS setting

Press MENU button to access options.

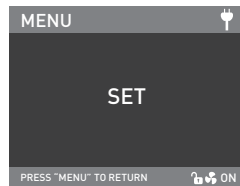
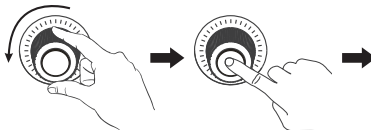
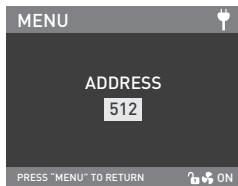




Rotate the "right knob" to ADDRESS/DMX. Press the "right knob" to enter the corresponding secondary menu.

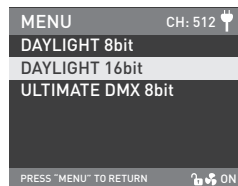
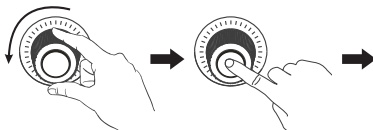
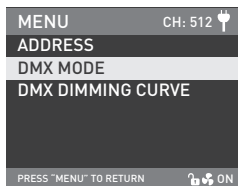


Rotate the "right knob" to ADDRESS. Press the "right knob" to enter the corresponding tertiary menu.

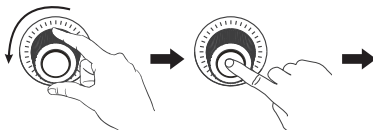
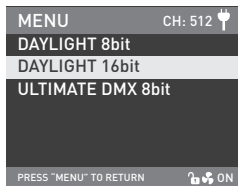


Rotate the "right knob" to select the desired ADDRESS code. Press the "right knob" to set.

②DMX MODE

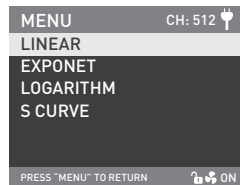
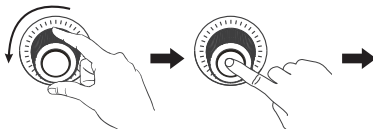
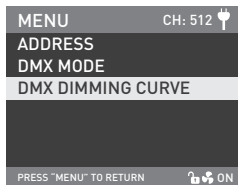


Rotate the "right knob" to DMX MODE. Press the "right knob" to enter the corresponding tertiary menu.

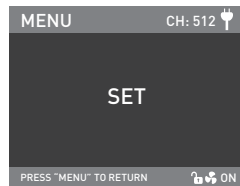
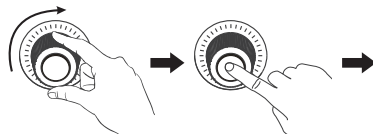
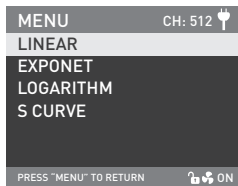


Rotate the "right knob" to select DAYLIGHT 8bit, DAYLIGHT 16bit or ULTIMATE DMX 8bit.
Press the "right knob" to set.

③DMX DIMMING CURVE



Rotate the "right knob" to DMX DIMMING CURVE. Press the "right knob" to enter the corresponding tertiary menu.



Rotate the "right knob" to select LINEAR, EXPONENT, LOGARITHM or S CURVE. Press the "right knob" to set.

2. DMX Remote Control

① Connect the fixture to the DMX/RDM consoles via DMX cable as shown below:



- 5-pin shielded cable with a diameter not less than 0.3mm must be used for connection between light fixture and DMX/RDM console, or between light fixture and light fixture. XLR plug/socket and the cable should be connected as shown above.

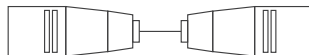
- Pin1, Pin2, Pin3 for connecting DMX signal. Pin4, Pin5 has no connection.

▲NOTE: When connecting DMX, make sure the internal pin is not in contact with the inner case. The fixture can match the DMX512 (1990) control signal.

- 5-pin and 3-pin XLR plug/socket conversion, the fixture comes with 5-pin XLR plug/socket. If a 3-pin XLR plug is used, please follow the instruction below.

5PIN
Pin 1:GND(SCREEN)
Pin 2:Signal(-)
Pin 3:Signal(+)
Pin 4:N/C
Pin 5:N/C

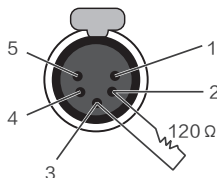
3PIN
Pin 1:GND(SCREEN)
Pin 2:Signal(-)
Pin 3:Signal(+)



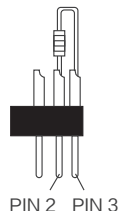
②DMX Terminator

In DMX control mode, the DMX output of the last light fixture should be connected with a DMX terminator (not included). The terminator is connected with a 120Ω(OHM) resistor across Pin 2 and Pin 3 (As shown below).

This prevents interference caused by DMX signals in the transmitting process.



DMX Terminator Connection
Connect a 120Ω(OHM) resistor across Pin 2 and Pin 3 in an XLR plug and insert into the DMX OUT socket on the last unit.



③Address Setting of the Light Fixture.

④Refer to the DMX reference guide and control the light via DMX/RDM console.

(For detailed operation please refer to the DMX/RDM console operation manual.)

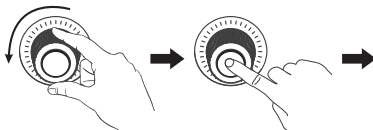
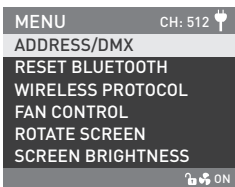
Note: DMX reference guide "Forza_720B_DMX_REFERENCE_GUIDE_EN" is downloadable from www.nanlite.com.

3. 2.4G Remote Control

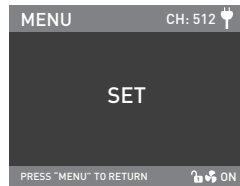
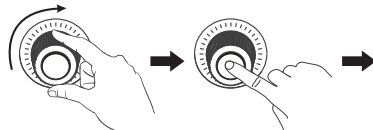
- Set the address of the 2.4G remote controller to be consistent with the light fixture, enabling the fixture to be remotely controlled by 2.4G remote controller or by APP via the transmitter box.

Note: ①2.4G remote controller and transmitter box are sold separately.

②The fixture supports the 2.4G wireless protocol V1.0 and V2.0. Set fixture to V2.0 while using WS-RC-C1 or WS-RC-C2 remote controller. Set fixture to V1.0 while using other remote controllers.



Rotate the "right knob" to WIRELESS PROTOCOL, press the "right knob" to enter the corresponding secondary menu.

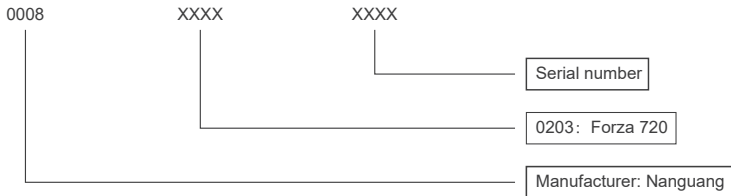


Rotate the "right knob" to select V1.0 or V2.0, press the "right knob" to set.

4. RDM Remote Control

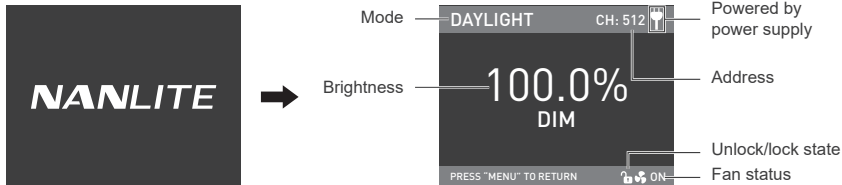
- ① Connect the light fixture to the console with RDM function using a connection cable, the connection method is the same as with a DMX/RDM console.
- ② Control the fixture via a console with RDM function. (For specific operation methods, please refer to the RDM console operation manual.)

Note: The UID format of the fixture is as follows:

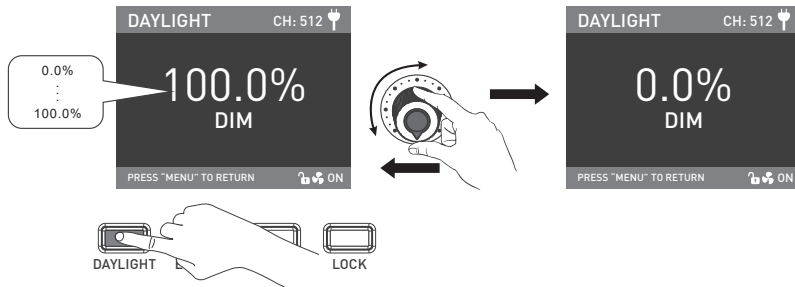


Operating Instructions

1. Be sure that the power switch of the control unit is in the "off " position. Now it is safe to connect the control unit and power the unit on, the screen will display "NANLITE".

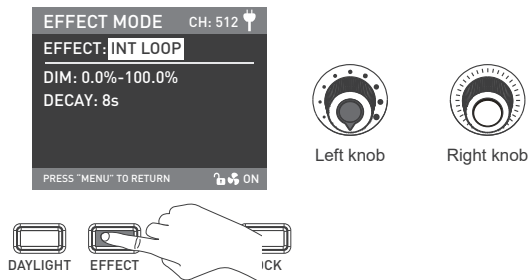


- ①DAYLIGHT button: Press the DAYLIGHT button to enter the DAYLIGHT MODE, rotate "left knob", clockwise to increase brightness while counterclockwise to reduce the brightness. The screen shows the percentage of brightness, DIM range: 0.0-100.0%.

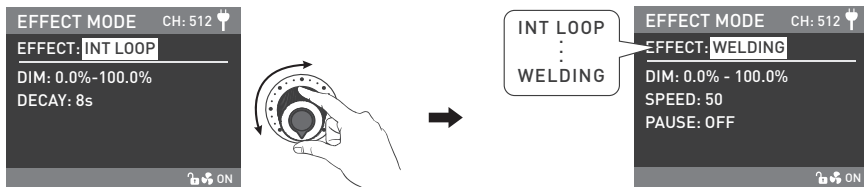


Note: In other modes, the DIM adjustment range is the same as that in DAYLIGHT mode. When the fixture function is unlocked, in any mode, press the "left knob" to turn off the fixture, the brightness percentage indicated on the screen will be 0.0%. Press again to restore the fixture to its previous state, and press continuously to switch the fixture between on and off.

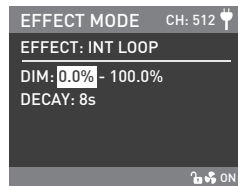
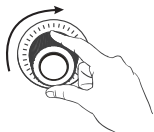
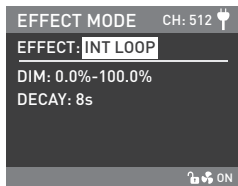
2. EFFECT button: Press the EFFECT button to enter EFFECT MODE.



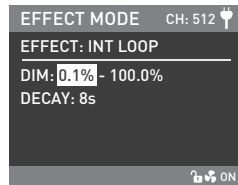
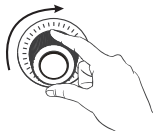
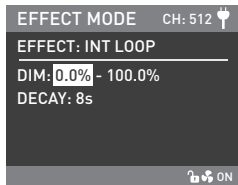
- Forza 720 has built-in effects including: INT LOOP, FLASH, PULSE, STORM AUTO, STORM MANUAL, TV, PAPARAZZI, CANDLE/FIRE, BAD BULB, FIREWORK, EXPLOSION AUTO, EXPLOSION MANUAL and WELDING.



Rotate the "left knob" to select the desired special effect.



Rotate the "left knob" to select the EFFECT.



Rotate the "right knob" to set the corresponding parameters under the effects.

Note:

1. All the special effects are set in the same way.
2. When setting the special effects of STORM MANUAL and EXPLOSION MANUAL, need to press the "right knob" to trigger the effects.

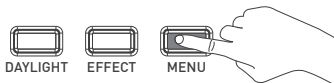
3. MENU button: Press the MENU button to enter the menu.



Left knob



Right knob

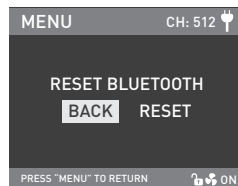
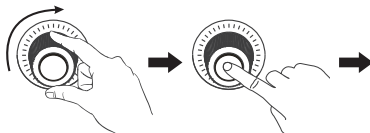


- Rotate the "right knob" to select the setting item and press the "right knob" to enter the corresponding secondary menu. Then rotate the "right knob" again to select corresponding options and press the "right knob" to set. Press the MENU button to return to the previous menu.

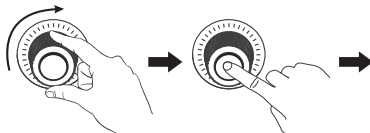
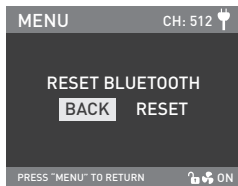
①ADDRESS/DMX

For more operation details please refer to P14.

②RESET BLUETOOTH



Rotate the "right knob" to RESET BLUETOOTH. Press the "right knob" to enter the corresponding tertiary menu.

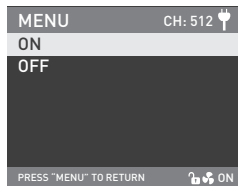
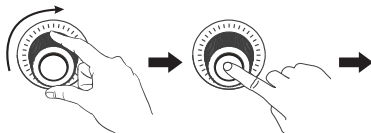


Rotate the "right knob" to select RESET. Press the "right knob" to set.

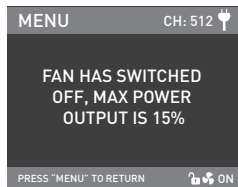
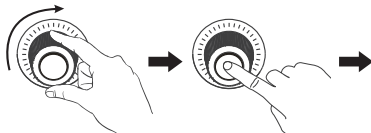
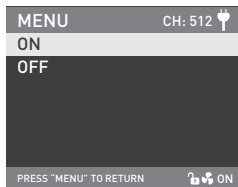
③WIRELESS PROTOCOL

For more operation details please refer to P19.

④ FAN CONTROL



Rotate the "right knob" to FAN CONTROL. Press the "right knob" to enter the corresponding secondary menu.

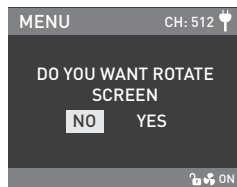
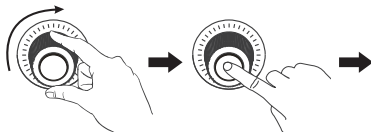


Rotate the "right knob" to select the fan ON or OFF. Press the "right knob" to set.

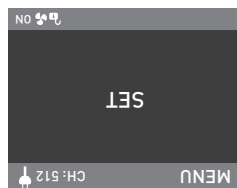
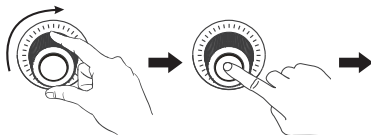
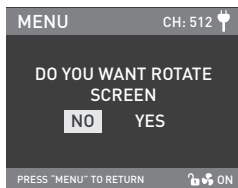
Note: 1. The maximum output is 100% when the fan is on.

2. The maximum output is 15% when the fan is off.

⑤ ROTATE SCREEN

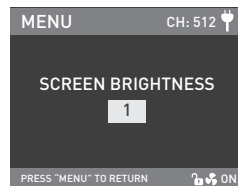
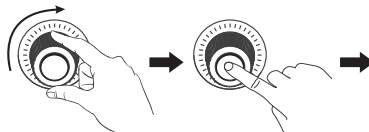
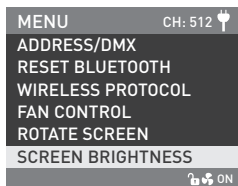


Rotate the "right knob" to ROTATE SCREEN. Press the "right knob" to enter the corresponding secondary menu.

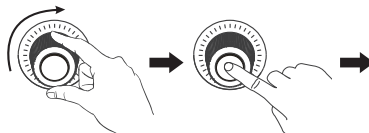
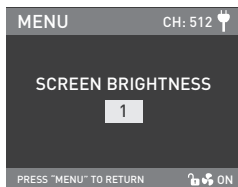


Rotate the "right knob" to select YES or NO. Press the "right knob" to set.

⑥SCREEN BRIGHTNESS

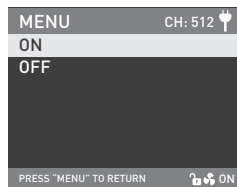
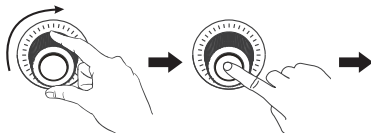
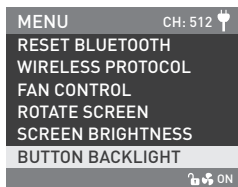


Rotate the "right knob" to SCREEN BRIGHTNESS. Press the "right knob" to enter the corresponding secondary menu.

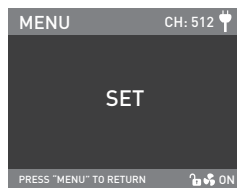
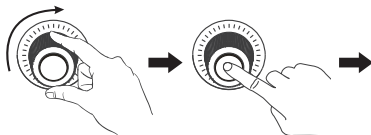
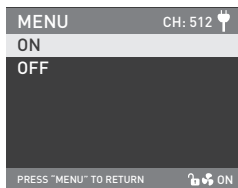


Rotate the "right knob" to select SCREEN BRIGHTNESS. Press the "right knob" to set.

⑦BUTTON BACKLIGHT

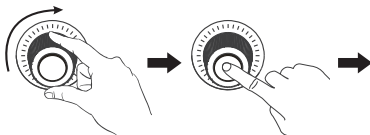
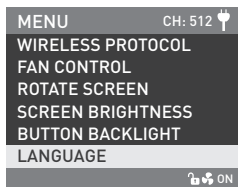


Rotate the "right knob" to BUTTON BACKLIGHT. Press the "right knob" to enter the corresponding secondary menu.

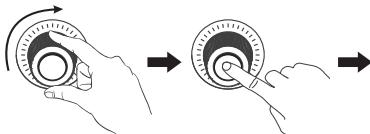


Rotate the "right knob" to select ON or OFF. Press the "right knob" to set.

⑧LANGUAGE



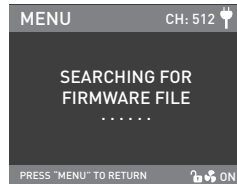
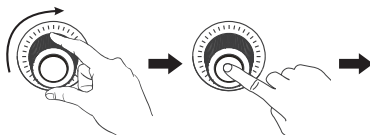
Rotate the "right knob" to LANGUAGE. Press the "right knob" to enter the corresponding secondary menu.



Rotate the "right knob" to select ENGLISH or 简体中文. Press "Right knob" to set.

⑨ FIRMWARE UPDATE

- Store the firmware files of the lamp head and the controller in the root directory of the USB flash drive at the same time (make sure the versions of the two firmware files are matched), and then Insert the USB flash drive into the USB port of the controller.

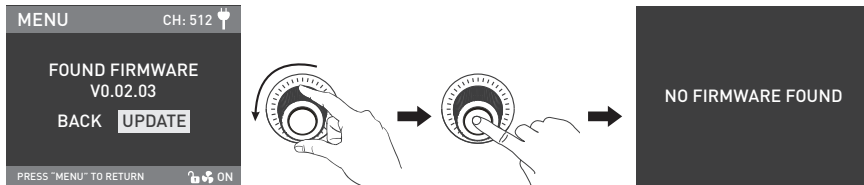


Rotate the "right knob" to FIRMWARE UPDATE. Press the "right knob" to enter the interface of SEARCHING FOR FIRMWARE FILE.

Note:

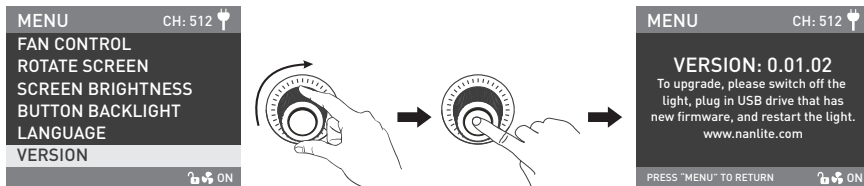
- (1) Download the firmware installation package from the website and please do not rename the file.
- (2) Ensure the format of the USB flash drive is FAT, FAT32 or exFAT.
- (3) If it prompts "PLEASE CONNECT THE LAMP HEAD TO THE CONTROLLER BEFORE FIRMWARE UPDATE", please confirm whether the lamp head is connected to the controller or whether loose connection occurs.
- (4) If it prompts "THE VERSIONS OF THE TWO FIRMWARE FILES DON'T MATCH, PLEASE CHECK THE FILES AND TRY AGAIN", please check whether the two firmware file versions are the same.
- (5) If it prompts "MISSING PARTS OF FIRMWARE FILES, PLEASE CHECK THE FILES AND TRY AGAIN", please check whether there are two firmware files in the USB flash drive.
- (6) If it prompts "NO FIRMWARE FOUND", please check whether the firmware file is correct, whether the firmware file is stored in the root directory of the USB flash drive, or whether the USB flash drive format is FAT, FAT32 or exFAT format.

- (7) If the firmware file still cannot be found after following all the steps mentioned above , please reformat the USB flash drive and try again.
- (8) If the lighting fixture still cannot identify the USB flash drive, please replace the USB flash drive with another one.



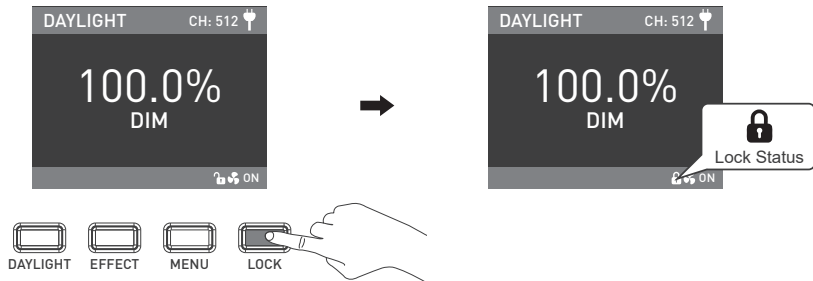
After the firmware file is found, will enter the selection interface of firmware update. Rotate the "right knob" to select UPDATE, and press the "right knob" to update the firmware. The fixture will restart automatically after the update is completed.

⑩VERSION



Rotate the "right knob" to VERSION. Press the "right knob" to check the current version.

4. LOCK button: Press and hold the LOCK button to lock all functions. Operation buttons or adjustment knobs can not change the current function. Press and hold the LOCK button again to release the Lock status.



5. When the fixture is not in use, please turn off the power switch.

Safety Precautions

1. Please check for possible damage caused in transit after opening the package. Please do not use if damage is found. And contact with the distributor or manufacturer as soon as possible.
2. Please do not use a power cable with damaged insulation. Please do not unplug too hard or drag the power cable directly.
3. Please make sure the voltage of power supply accords with the voltage specified on the fixture before installation.
4. Please turn the fixture off when it is not in use or before cleaning.
5. Please keep the fixture safely stored and away from children.

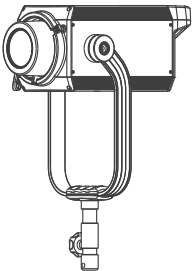
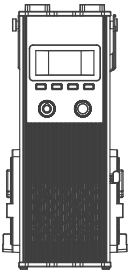


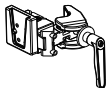
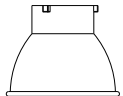

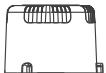


Notice

1. Please remove the COB protective cap before using the fixture.
2. Please do not look directly at the emitter when the fixture is on .
3. Please do not place the fixture near any flammables and explosives.
4. Please do not place any object on the fixture or allow liquid to flow inside the fixture.
5. Please do not place the fixture near any flammable or volatile substances like alcohol or gasoline.
6. Please do not use strong detergent for cleaning. Please wipe off the dirt by using a cloth with neutral cleanser when cleaning the fixture.
7. Please set up the fixture in a dry and well-ventilated place. Please do not use it in any humid, dusty or overheated environment. Meanwhile, please also check whether the fan and vent are unimpeded.
8. Please do not disassemble the fixture at will to repair by yourself. Qualified professionals should conduct maintenance under the condition of strictly following the operating procedures described in this manual.
9. Please do not cover the vents when using, to avoid affecting heat dissipation, and resulting in damage. Please pay attention to anti-scald when using the fixture for a long time, since the surface temperature of fixture will be high.

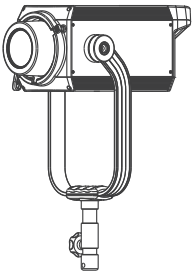
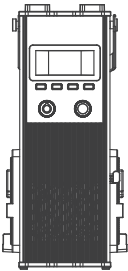


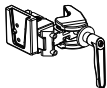
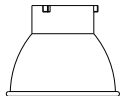
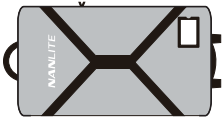
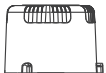


■ General Fault Detection and Diagnosis

Fault Detection	Diagnosis
The light won't boot up properly	<ol style="list-style-type: none"> 1. Please check whether the connection between control unit and cable or fixture are loose. 2. Please check whether the voltage value is within the specified parameters.
The fixture can be operated manually, but DMX control is not working.	<ol style="list-style-type: none"> 1. Please check whether the DMX address code setting of the fixture is correct. 2. Please check whether the DMX signal cable is connected correctly and without damaged.
LCD display is on, but fixture cannot be operated.	Please check if the LCD display shows "🔒". Press and hold the LOCK button for 2s to unlock.
The fan doesn't work.	<ol style="list-style-type: none"> 1. Please check if the fan is OFF. 2. If the screen displays "Fan abnormal", please contact with place of purchase or supplier for purchase or replacement.
If the failure is not resolved after troubleshooting, please contact with distributor or manufacturer for maintenance.	

What's in the box? Please kindly check.

Forza 720×1	Control Unit×1	Power Cable×1	Connecting Cable×1
			
		Quick Release Clamp×1	Reflector×1
			
Carrying Bag×1	COB Protective Cap×1	DMX Reference Guide×1	User Manual×1
			

Forza 720 Kit-ST

Forza 720×1	Control Unit×1	Power Cable×1	Connecting Cable×1
			
		Quick Release Clamp×1	Reflector×1
			
Trolley Case×1	COB Protective Cap×1	DMX Reference Guide×1	User Manual×1
			

This manual has been compiled according to the rigorous testing for Nanlite products. Product designs are subject to change without prior notice. The latest version of the manual for this product is downloadable at www.nanlite.com.

Version: V4 2022-10-10

NANLITE

☎ +86-754-85751187

☎ +86-754-85300887

✉ service@nanlite.com

📍 Dongli Section, Highway 324, Chenghai, Shantou City, Guangdong Province, China

www.nanlite.com